

The background of the slide features a composite image. On the right, a person's profile is visible, looking towards a glowing blue globe. The globe is overlaid with a complex network of white and blue lines, representing digital connections or data flow. The overall color palette is dominated by deep blues and bright whites, creating a high-tech, digital atmosphere.

RACISM AND DIGITAL MEDIA

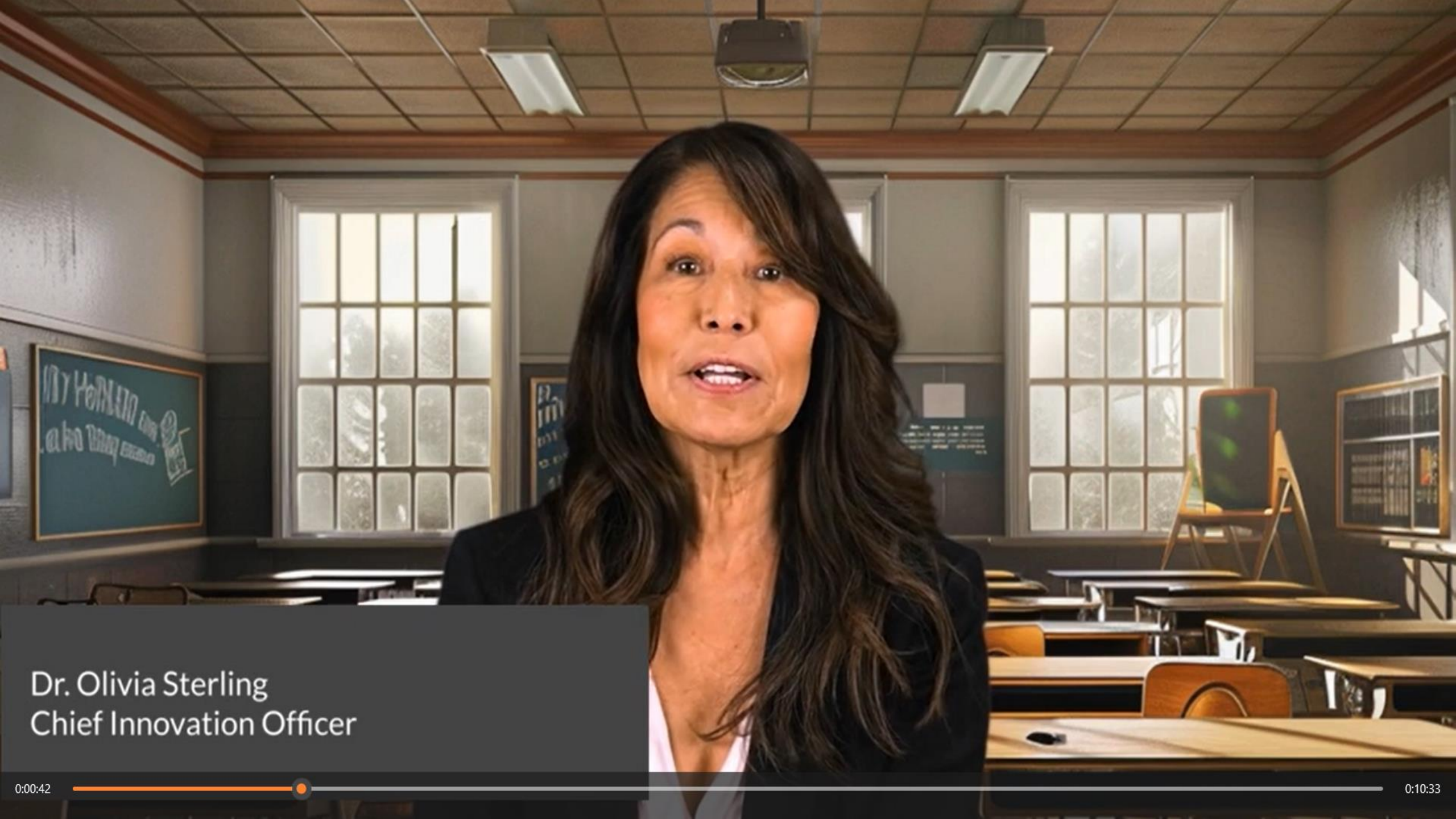
Spring 2024

Macalester College
Ellie Spangler '26


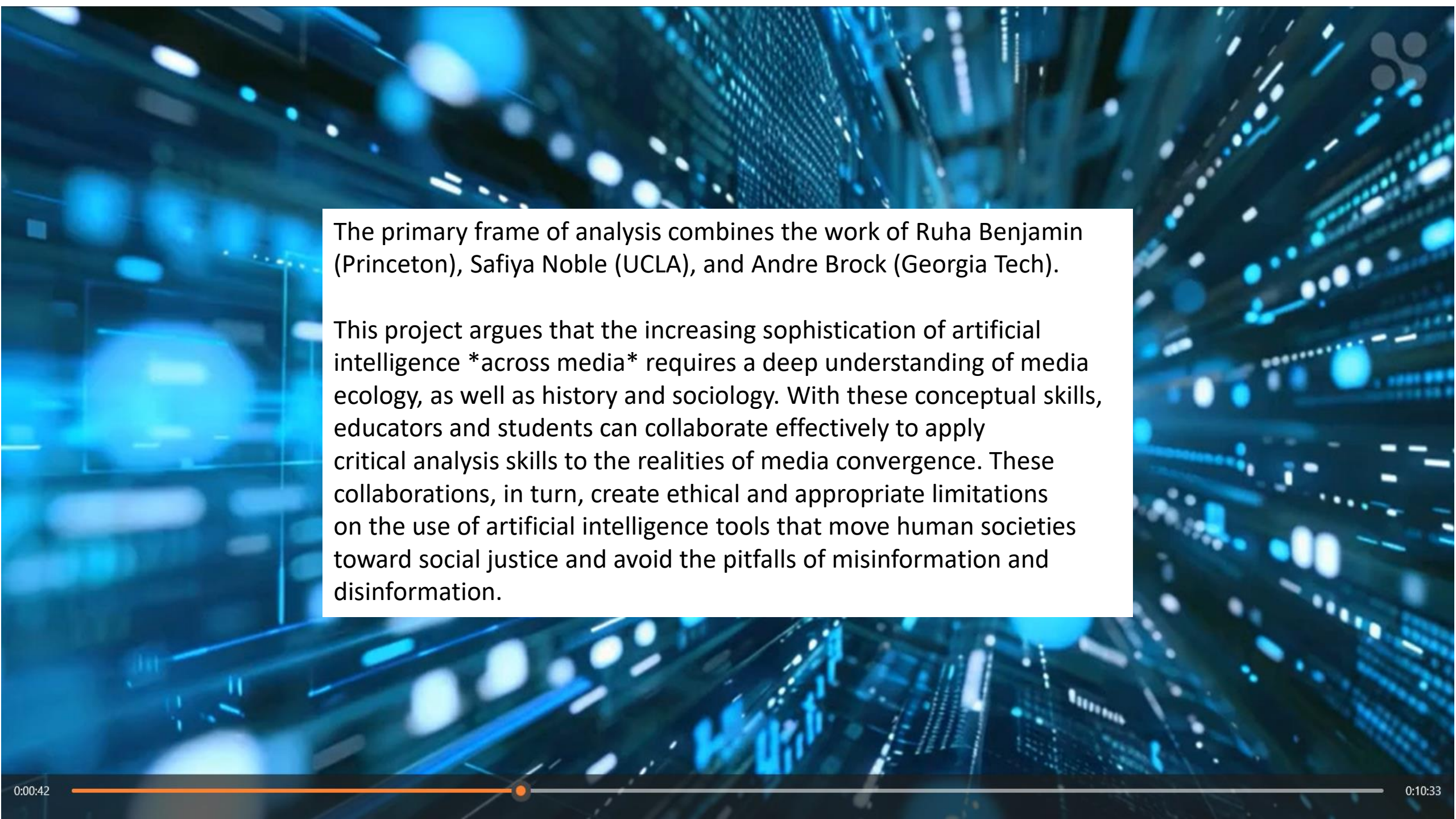
Dr. Walter Greason
Fortune Design Lab



Dr. Lucas Everett, Ph.D.
Director of Media and Technology Studies

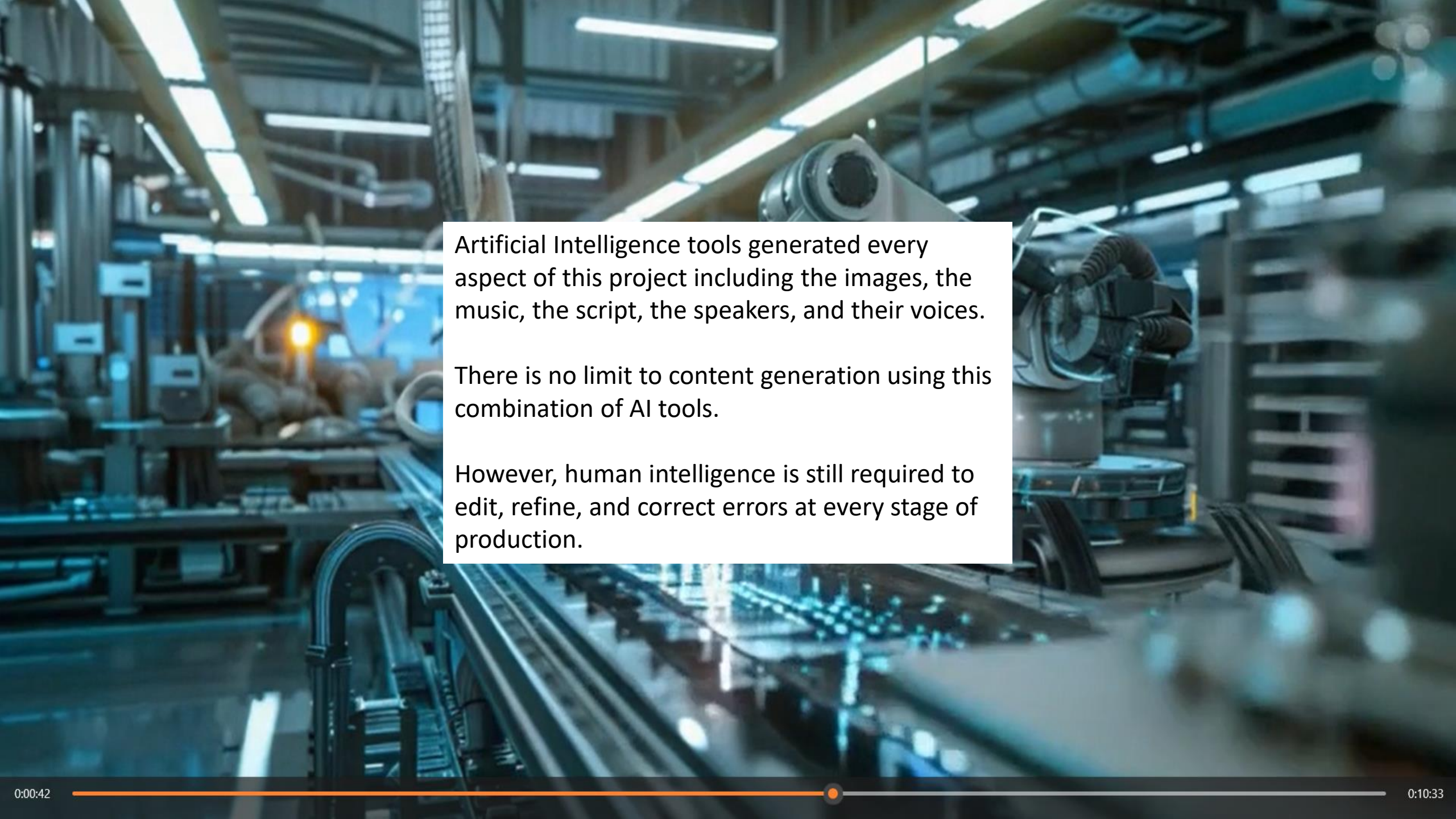


Dr. Olivia Sterling
Chief Innovation Officer



The primary frame of analysis combines the work of Ruha Benjamin (Princeton), Safiya Noble (UCLA), and Andre Brock (Georgia Tech).

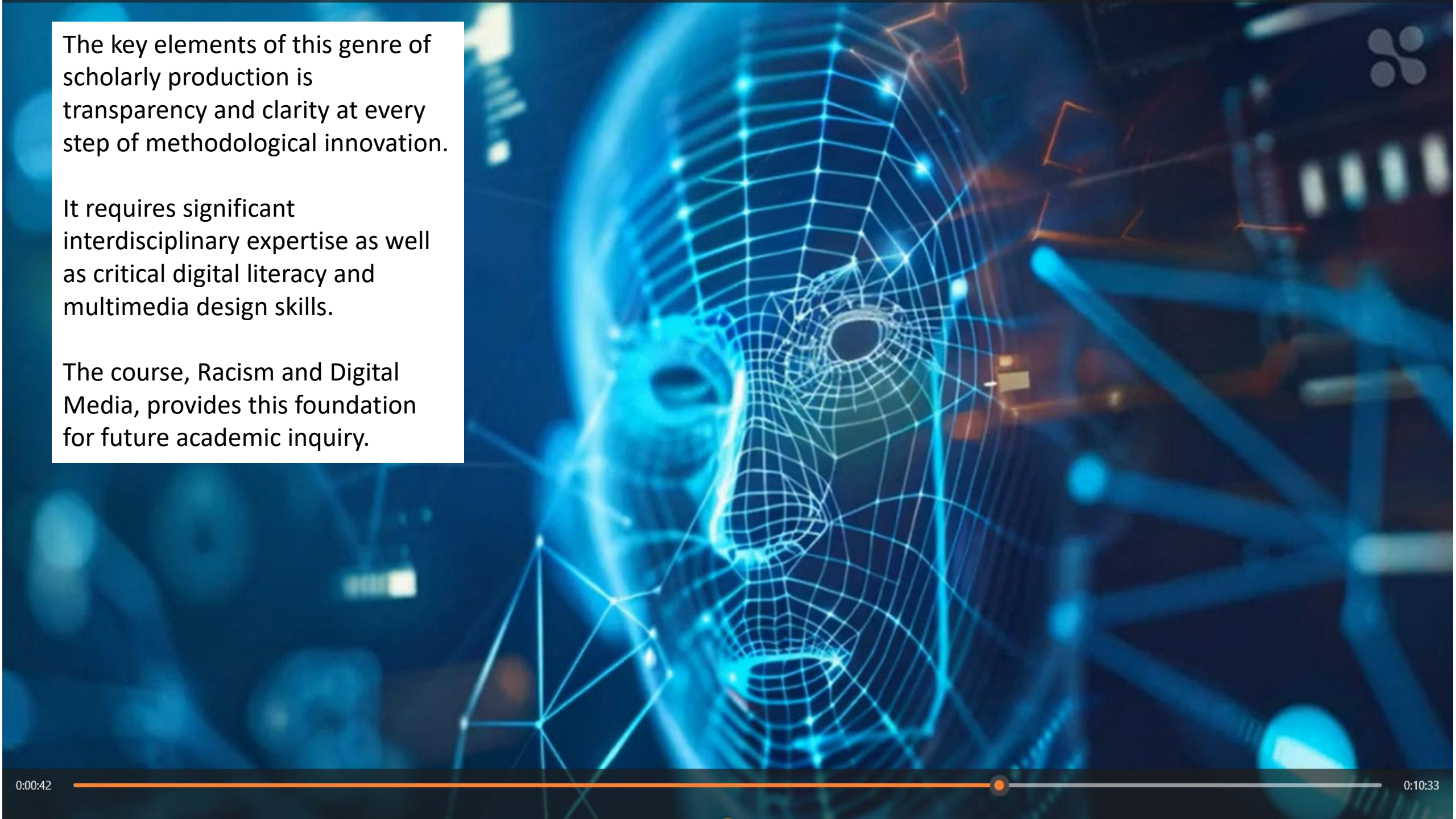
This project argues that the increasing sophistication of artificial intelligence *across media* requires a deep understanding of media ecology, as well as history and sociology. With these conceptual skills, educators and students can collaborate effectively to apply critical analysis skills to the realities of media convergence. These collaborations, in turn, create ethical and appropriate limitations on the use of artificial intelligence tools that move human societies toward social justice and avoid the pitfalls of misinformation and disinformation.



Artificial Intelligence tools generated every aspect of this project including the images, the music, the script, the speakers, and their voices.

There is no limit to content generation using this combination of AI tools.

However, human intelligence is still required to edit, refine, and correct errors at every stage of production.



The key elements of this genre of scholarly production is transparency and clarity at every step of methodological innovation.

It requires significant interdisciplinary expertise as well as critical digital literacy and multimedia design skills.

The course, Racism and Digital Media, provides this foundation for future academic inquiry.

